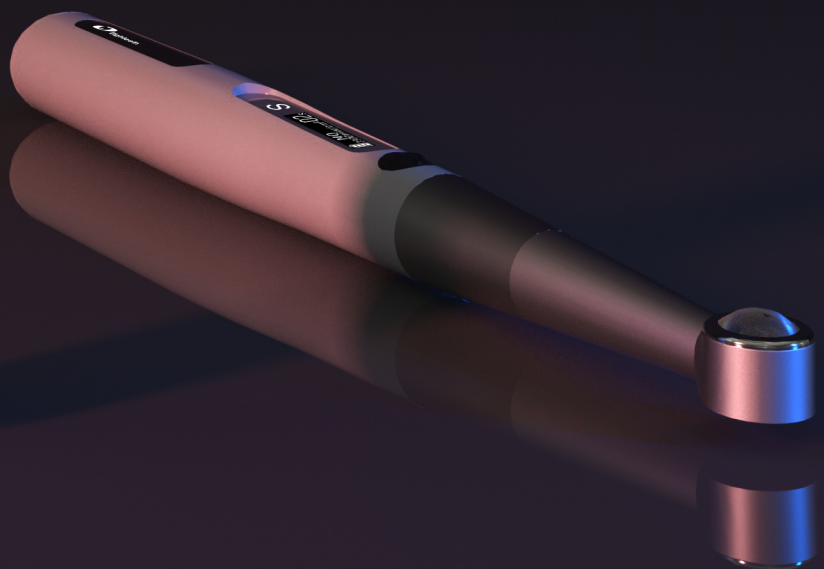
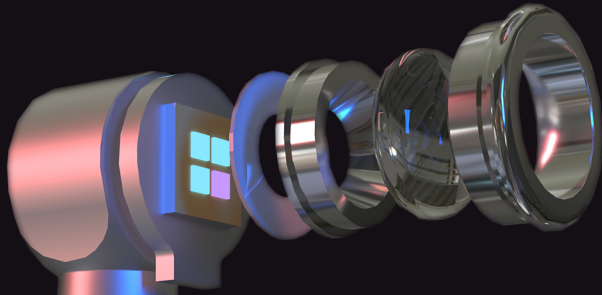


Curing Pen

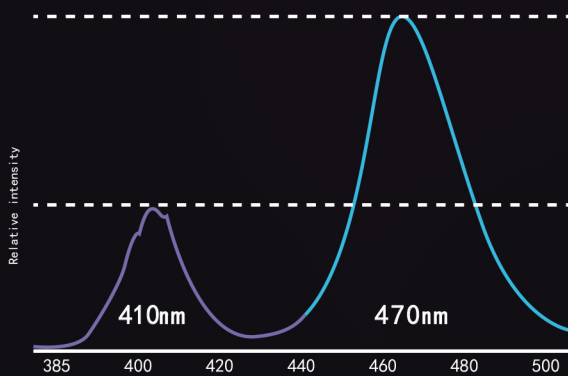
4 LEDs curing light





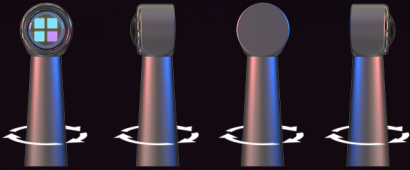
Smart controlling chip
keeps light output consistent

Light intensity:
 $1000\text{mW}/\text{cm}^2$, $1500\text{mW}/\text{cm}^2$, $2300\text{mW}/\text{cm}^2$
 $600\text{mW}/\text{cm}^2$ (detect mode)



wavelength: 385 - 515nm
3 Blue, 1 violet, 10w LED

360° rotatable head

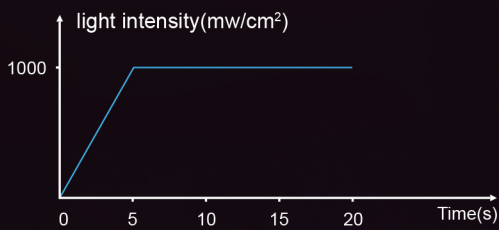


Intensity digital display

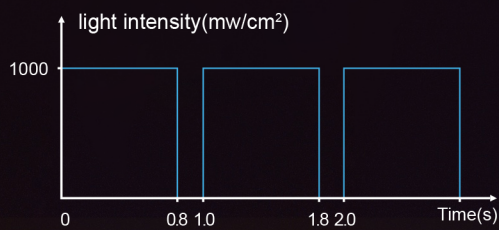


Multiple curing options

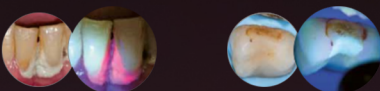
Ramp mode



Pulse mode



Caries detection



Technical parameter:

Dimension: 24*21*230(mm)

Net weight: 109g

Light source head size: $\phi 13\text{mm}$

Light output lens size: $\phi 9.3\text{mm}$

Power supply: >1200 times

2300mW/cm², 3 Sec

Curing Pen

4 LEDs curing light

